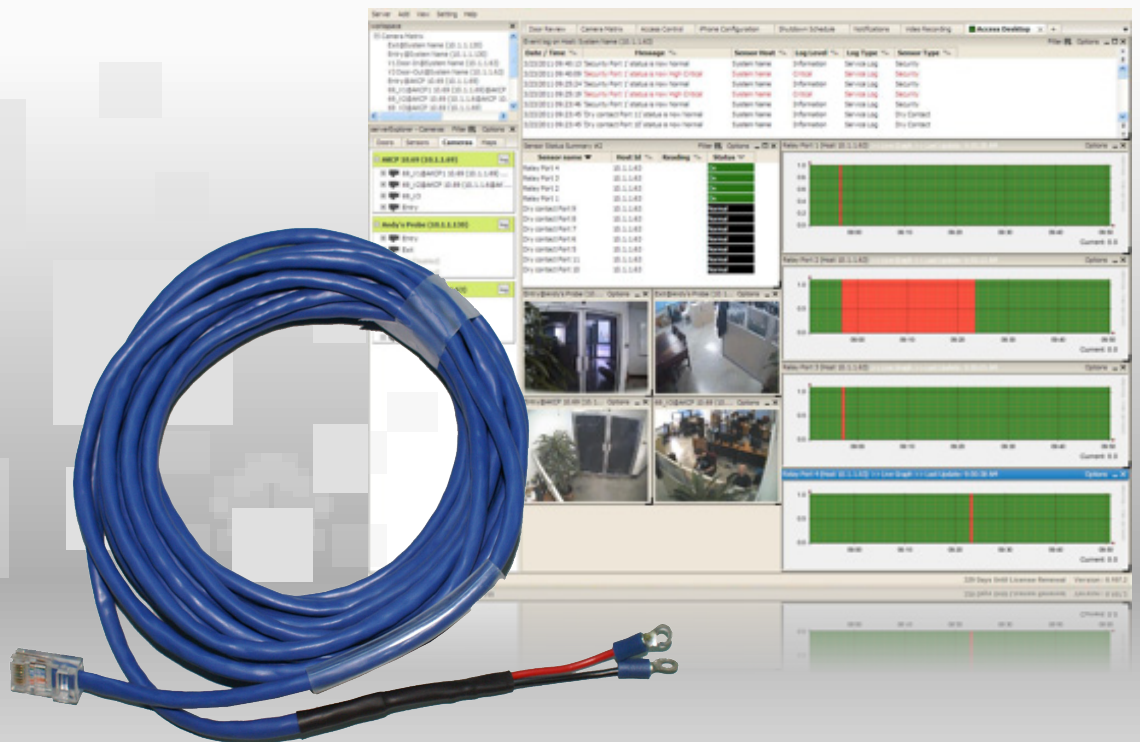


Dry Contact Sensor - DCSXX



Dry Contact Sensor

The single port RJ-45 Dry Contact Sensor with an ALARM/NORMAL indication in the software. Can have up two on a sensorProbe2, eight on a sensorProbe8 and 600 Dry Contact Sensors on a securityProbe unit.

Dry contact sensors are user definable and can be used to detect many different inputs such as UPS status, security systems, air conditioning status.

SNMP interface for alarm/normal status. SNMP traps can be sent when the sensor is in a critical state.

SNMP polling is possible via SNMPget. Web browser interface is available. When an alarm condition is activated the description and location of the fault can be sent via an email or SNMP trap.

Dry Contact Sensor's Main Features

- **Power source:** powered by the sensorProbe or securityProbe. No additional power needed
- **sensorProbe and securityProbe auto-detects the presence of the dry contact sensor**
- **Up to 2 security sensor per sensorProbe2, 8 per sensorProbe8 and securityProbe**
- **Full autosense including disconnect alarm**
- **Dry contact sensor OID is:**
1.3.6.1.4.1.3854.1.2.2.1.18.1.3.X

Technical Specifications

Measurement range : Alarm or Normal

Communications cable : RJ45 jack to sensor using UTP Cat 5 wire

Maximum extension cable length 305m (1000 ft.) with approved low capacitance shielded cable or UTP.

Input voltage range : 0 to 5 volts

Normal input voltage is settable under software

Sensor type : Open / Closed contact switch

Current Range : Can sink up to 20 mAmps

Measurement rate : Multiple readings every second



www.systemtech.se

Tel: 013-35 70 30

sales@systemtech.se

Linnégatan 14 • 582 25 LINKÖPING