

# Impact-P 101A



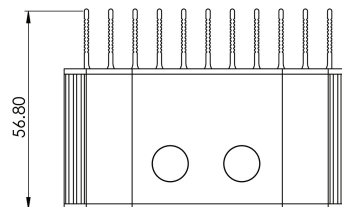
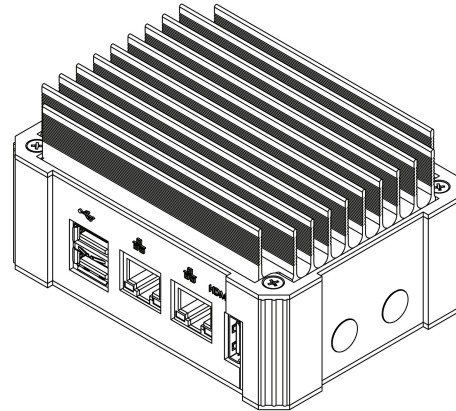
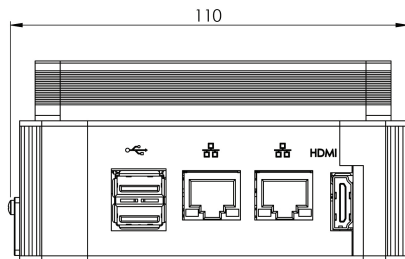
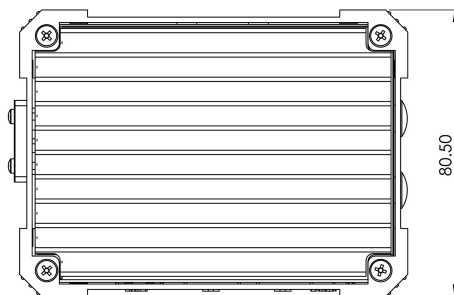
## Features

The IoT Edge ready Impact-P 101A is an ultra-compact, DIN Rail mountable, low power embedded system, utilising the superb Intel Atom E3940 processing technology.

Key features:

- 3 year warranty
- 15 year life cycle
- DIN Rail Mount

## Dimensions



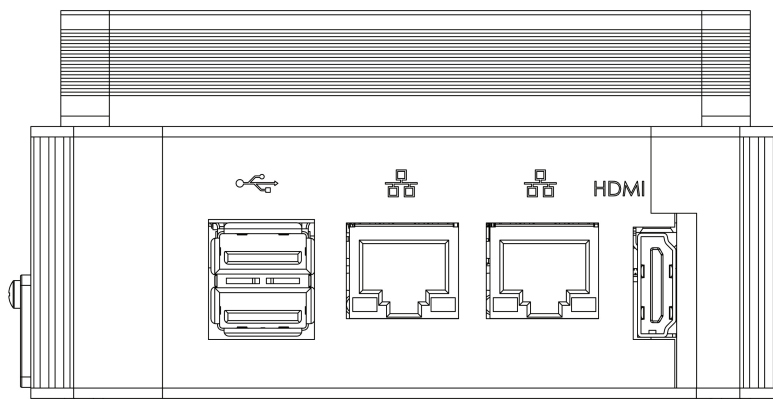
# Impact-P 101A

The information is believed to be accurate. However Amplicon Liveline Limited accepts no responsibility for any problems caused by errors and omissions. Specifications are subject to change without notice.

## Specifications

Hardware Specification	CPU: Intel Atom E3940 SOC Main memory: 4GB LPDDR4 LAN: Dual integrated 10/100/1000	Environmental Operation	Acoustic noise: Near silent operation Operating Temperature: -40°C to 85°C (with wide temp components) Humidity: 0 to 95% non-condensing
BIOS	AMI EFI	Environmental Storage	Temperature: -40°C to 85°C Humidity: 5% to 95% RH Non-condensing
Display	HDMI 1.4b: up to 3840 x 2160 at 30Hz	Certifications	CE/UKCA
Storage	32GB EMMC		
System Expansion	1 x Full size mPCIe M.2 E-Key 2230 (PCIe x1, USB 2.0)		
Supported O/S	Windows 10, Windows 10 IoT, Linux		
External Interfaces	2 x USB 3.0 Front 2 x RJ45 LAN 1 x HDMI		
Main board power options	Supports DC input: 12VDC or 24VDC DC on Phoenix connector		
Mechanical	Design: Rugged compact embedded design Cooling: Fanless design Construction: Aluminium with carbon fibre composite Colour: Black Dimensions: 110 x 56.8 x 80.5mm (WxHxD) Gross Weight: 400g		

## Rear I/O plate



**SYSTEM  
TECHNOLOGY**  
SWEDEN AB

[www.systemtech.se](http://www.systemtech.se)

+46 (0)13 35 70 30 • [sales@systemtech.se](mailto:sales@systemtech.se)  
Linnégatan 14 • 582 25 LINKÖPING

**Amplicon.com**

**IT and Instrumentation for industry**

**Amplicon**

Sales: +44 (0) 1273 570 220 Website: [www.amplicon.com](http://www.amplicon.com) Email: [sales@amplicon.com](mailto:sales@amplicon.com)