

# LEVEL1000

## WATER LEVEL & TEMPERATURE DATA LOGGER



### Features

- Resistant to corrossions and chemicals
- Rugged design
- User-friendly
- Reusable
- Submersible up to 100'
- Programmable start time
- Powerful software simplifies analysis

### Applications

- Water level monitoring
- Environmental studies
- Waste water treatment
- Flood analysis
- Groundwater monitoring
- Irrigation canals
- Lake and wetland studies
- Storm water studies
- Landfill and hazardous site analysis

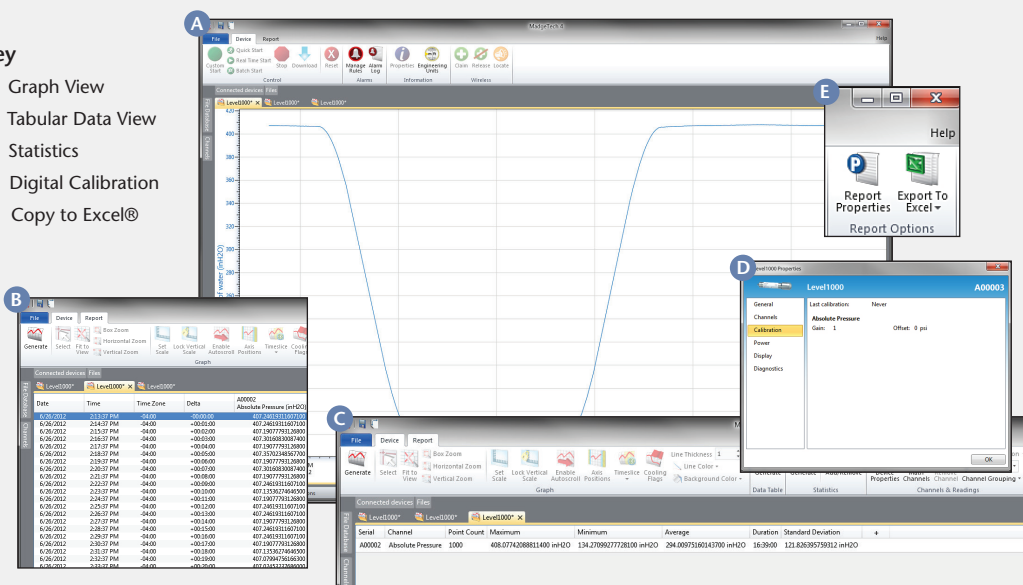


The Level1000 is a battery powered, stand alone, submersible water level and temperature recorder. This is an all-in-one compact, portable, easy to use device that will measure and record up to 16,383 measurements. The storage medium is non-volatile solid state memory, providing maximum data security even if the battery becomes discharged. The device can be started and stopped directly from your computer and its small size allows it to fit almost anywhere. The Level1000 makes data retrieval quick and easy. Simply plug it into an empty COM or USB port and our user-friendly software does the rest.

## MADGETECH DATA LOGGER SOFTWARE

### Key

- A** Graph View
- B** Tabular Data View
- C** Statistics
- D** Digital Calibration
- E** Copy to Excel®



### Software Features:

- Multiple graph overlay
- Statistics
- Digital calibration
- Zoom in/ zoom out
- Lethality equations (F0, PU)
- Mean Kinetic Temperature
- Full time zone support
- Data annotation
- Min./Max./Average lines
- Data table view
- Automatic report generation
- Summary view
- Multilingual

# LEVEL1000 SPECIFICATIONS\*

\*SPECIFICATIONS ARE SUBJECT TO CHANGE WITHOUT NOTICE. SPECIFIC WARRANTY REMEDY LIMITATIONS APPLY. CALL 1-603-456-2011 OR GO TO WWW.MADGETECH.COM FOR DETAILS.

<b>Temperature Sensor:</b>	Semiconductor
<b>Temperature Range:</b>	-40 °C to +80 °C (-40 °F to +176 °F)
<b>Temperature Resolution:</b>	0.1 °C (0.18 °F)
<b>Calibrated Accuracy:</b>	±0.5 °C (0 to +50 °C)
<b>Pressure Sensor:</b>	Semiconductor strain gauge
<b>Media Compatibility:</b>	Must be compatible with 303 stainless steel
<b>Measurement Range:</b>	0 ft to 30 ft
<b>Resolution:</b>	0.05 in
<b>Calibrated Accuracy:</b>	±8.3 in of water (1.0 in typical at 25 °C)**
<b>Response Time:</b>	90% change in 1ms
<b>Repeatability:</b>	±0.5 %FSR; ±0.2% typical
<b>Proof Pressure:</b>	90 PSIA
<b>Memory:</b>	16,383 readings per channel; 32,766 total readings
<b>Real Time Recording:</b>	May be used with PC to monitor and record data in real time

\*\*Please note, the Level1000 does not compensate for barometric pressure changes, therefore these changes are not included in the accuracy specifications.

<b>Reading Rate:</b>	1 reading every 2 seconds up to 1 reading every 12 hours
<b>Start Modes:</b>	Software programmable immediate start or delay start up to six months in advance
<b>Calibration:</b>	Digital calibration through software
<b>Calibration Date:</b>	Automatically recorded within device
<b>Battery Type:</b>	3.6V lithium battery included; <b>user replaceable</b>
<b>Battery Life:</b>	1 year typical at 25 °C
<b>Data Format:</b>	Date and time stamped °C, °F, K, °R; PSI, inches, feet, millimeters, centimeters, meters (of water column)
<b>Time Accuracy:</b>	±1 minute/month (RS232 cable not in use)
<b>Computer Interface:</b>	PC serial or USB (interface cable required); 2,400 baud
<b>Software:</b>	XP SP3/Vista/Windows 7/Windows 8
<b>Operating Environment:</b>	-40 °C to +80 °C (-40 °F to +176 °F), 0 %RH to 100 %RH
<b>Dimensions:</b>	5.7 in x 1.25 in dia. (145 mm x 32 mm)
<b>Weight:</b>	8 oz (220 g)
<b>Approvals:</b>	CE

**BATTERY WARNING: RISK OF FIRE OR EXPLOSION. DO NOT RECHARGE, FORCE OPEN, HEAT OR DISPOSE OF IN FIRE.**

## ORDERING INFORMATION

MODEL	DESCRIPTION
LEVEL1000	Water Level and Temperature Recorder
IFC110	Software, manual and RS232 interface cable
IFC200	Software, manual and USB interface cable
Calibration Certificate	Calibration Certificate available for data logger
TLH-5902	Replacement battery for Level1000

**ASK ABOUT OUR OTHER DATA LOGGERS**

- Temperature
- Humidity
- Pressure
- pH
- Level
- Shock
- LCD Display
- Pulse/Event/State
- Current
- Voltage
- Wireless
- Intrinsically Safe
- Spectral Vibration
- Motion

For Quantity Discounts call 603-456-2011 or email [sales@madgetech.com](mailto:sales@madgetech.com)