

TRANSITEMP II

COLD CHAIN TEMPERATURE DATA LOGGER



Features

- Programmable Alarm and Warn Ranges with Alarm Delay
- Instantaneous Out of Range Indication
- Programmable or Manual Start
- Inexpensive
- Splash Resistant (IP64)
- Sleek Enclosure with Lanyard Attachment
- Multi Use

Applications

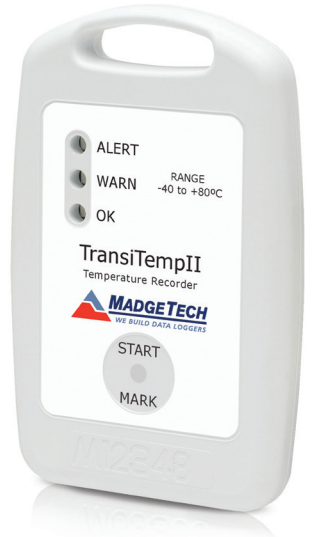
- Verification of Safe Shipment and Storage of Perishable Goods
- Implementation of HACCP Programs
- Cold Chain Monitoring
- Medical and Pharmaceutical Shipping
- Supermarkets, Warehouses, and Cold Storage

The TransiTemp II is a low cost, splash proof temperature data logger featuring a highly precise semiconductor temperature sensor and an ABS plastic enclosure. This affordable device is ideal for monitoring and recording the temperature of all types of perishable products, including food items and medical/pharmaceutical goods, both in storage and in transit. Program the TransiTemp II for an immediate start or a delayed start for up to 30 days. The device can also be started by use of a magnetic wand. Because there are no buttons on this logger, there is no risk of it being accidentally stopped or started.

The reading rate can be set anywhere between once every five seconds to once every thirty minutes. The total reading capacity of the TransiTemp II is 32,767 data points, one of the highest reading limits of all such loggers on the market today. For increased understanding of events that impact recorded temperatures, users can "mark" data points with a quick wave of the magnetic wand.

Three status LED indicators alert the user to the temperature status, with green signaling safe conditions, yellow indicating that warning limits have been exceeded, and red denoting that alarm limits have been exceeded.

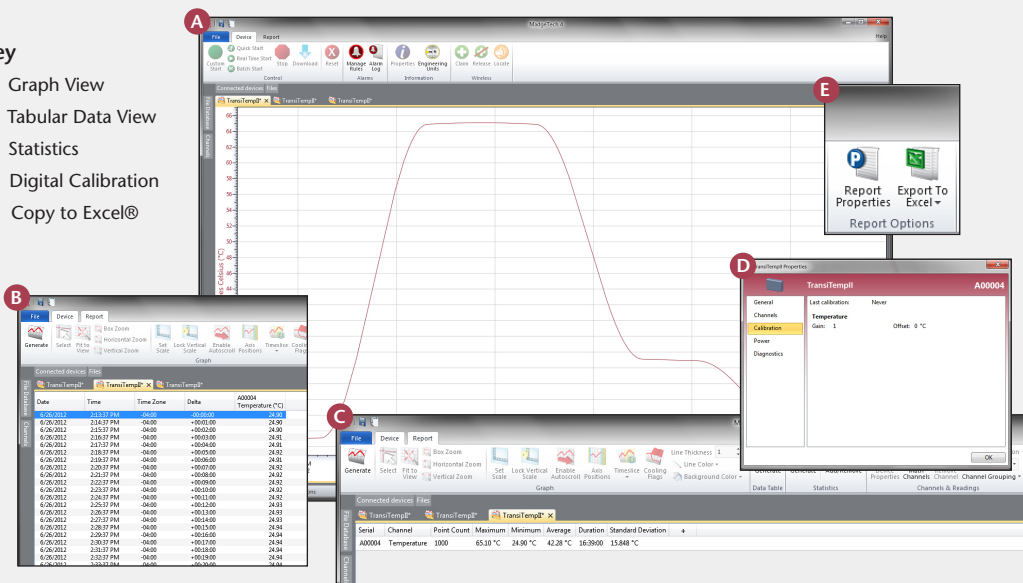
Two of the most outstanding features of the TransiTemp II are the available IFC300 docking station (*sold separately*) and the accompanying free software. To download data, simply slip the logger into the docking station and select "Download Data." After download, the software's clear, easy-to-read graphs and data tables are automatically created and ready to use. Temperature data may be shown in degrees Celsius, Fahrenheit, Kelvin or Rankine. More complex analyses, such as Mean Kinetic Temperature, can be performed with just one click of the mouse, while users needing to perform additional analyses can easily export data to MS Excel®.



MADGETECH DATA LOGGER SOFTWARE

Key

- A** Graph View
- B** Tabular Data View
- C** Statistics
- D** Digital Calibration
- E** Copy to Excel®



- ### Software Features:
- Multiple graph overlay
 - Statistics
 - Digital calibration
 - Zoom in/ zoom out
 - Lethality equations (F0, PU)
 - Mean Kinetic Temperature
 - Full time zone support
 - Data annotation
 - Min./Max./Average lines
 - Data table view
 - Automatic report generation
 - Summary view
 - Multilingual

TRANSITEMPII SPECIFICATIONS*

*SPECIFICATIONS ARE SUBJECT TO CHANGE WITHOUT NOTICE. SPECIFIC WARRANTY REMEDY LIMITATIONS APPLY. CALL 1-603-456-2011 OR GO TO WWW.MADGETECH.COM FOR DETAILS.

Temperature

Sensor:	Semiconductor
Measurement Range:	-40 °C to +80 °C (-40 °F to +176 °F)
Resolution:	0.1 °C (0.18 °F)
Calibrated Accuracy:	±0.5 °C (±0.9 °F)
Specified Accuracy Range:	-10 °C to +40 °C (14 °F to +104 °F)
Response Time:	90% of change in 30 minutes typical in slow moving air
Calibration:	Digital calibration through software
Calibration Date:	Recorded within device; software notifies user when calibration is due
Memory:	32,767 readings; software configurable memory wrap
Reading Rate:	5 seconds to 30 minutes, selectable in software
Start Modes:	Immediate start, delay start up to 30 days in advance, or manual start with magnetic switch
Temperature Alarm:	Configurable temperature alarm with programmable high and low alarm limits, high and low warn limits. Each set point may be individually enabled or disabled
Alarm Delay:	Programmable alarm delay inhibits alarm until alarm limits are exceeded for a total time from the start of recording

BATTERY WARNING: FIRE, EXPLOSION, AND SEVERE BURN HAZARD. DO NOT RECHARGE, DISASSEMBLE, HEAT ABOVE 100 °C (212 °F), INCINERATE OR EXPOSE CONTENTS TO WATER.

Blinking Status Indicators:	
Green:	Indicates safe conditions during logging
Yellow:	Indicates warn limits have been exceeded
Red:	Indicates alarm criteria have been exceeded
Marking Feature:	Date and time stamp may be placed in the recorded data with the magnetic switch. The marking feature may be configured to clear the alarm/warn indicators.
Password Protection:	An optional password may be programmed into the device to restrict access to configuration options. Data may be read out without the password.
*Battery Type:	3.6V lithium battery, *Must be sent to MadgeTech for battery replacement.
Battery Life:	1 year typical at 25 °C (77 °F), 1 minute reading intervals
Time Accuracy:	±2 minutes/month at 25 °C (77 °F), ±5 mins./month at -10 °C to +40 °C (14 °F to 104 °F)
Data Format:	Date and time stamped at °C, °F, K, °R
Computer Interface:	USB docking station to PC; 38,400 baud
Software:	XP SP3/Vista/Windows 7/Windows 8
Operating Environment:	-40 °C to +80 °C (-40 °F to 176 °F), 0 %RH to 100 %RH
Ingress Protection:	IP64 (splash resistant)
Weight:	1.4 oz (40 g)
Dimensions:	3.3 in x 2.1 in x 0.4 in (83 mm x 54 mm x 11 mm)
Enclosure:	ABS plastic, white
Approvals:	CE
Product Maintenance:	The TransiTempII exchange program provides the user with a new replacement device at a reduced cost when battery is depleted or device is in need of factory calibration. Call for details.

ORDERING INFORMATION

MODEL	DESCRIPTION
TransiTempII	Cold Chain/Perishables Temperature Recorder
IFC300	USB Docking Station, Software and Manual
Calibration Certificate	Calibration Certificate available for data logger
MadgeTech 4 Secure Software License	License for MadgeTech Secure Software (unlimited users, 1 license per computer, more licenses are available.)
Exchange Program	When product battery is depleted or device requires factory calibration, the product can be exchanged for a new TransiTempII Data Logger at a reduced cost. Call for details

ASK ABOUT OUR OTHER DATA LOGGERS

- Temperature
- Humidity
- Pressure
- pH
- Level
- Shock
- LCD Display
- Pulse/Event/State
- Current
- Voltage
- Wireless
- Intrinsically Safe
- Spectral Vibration
- Motion